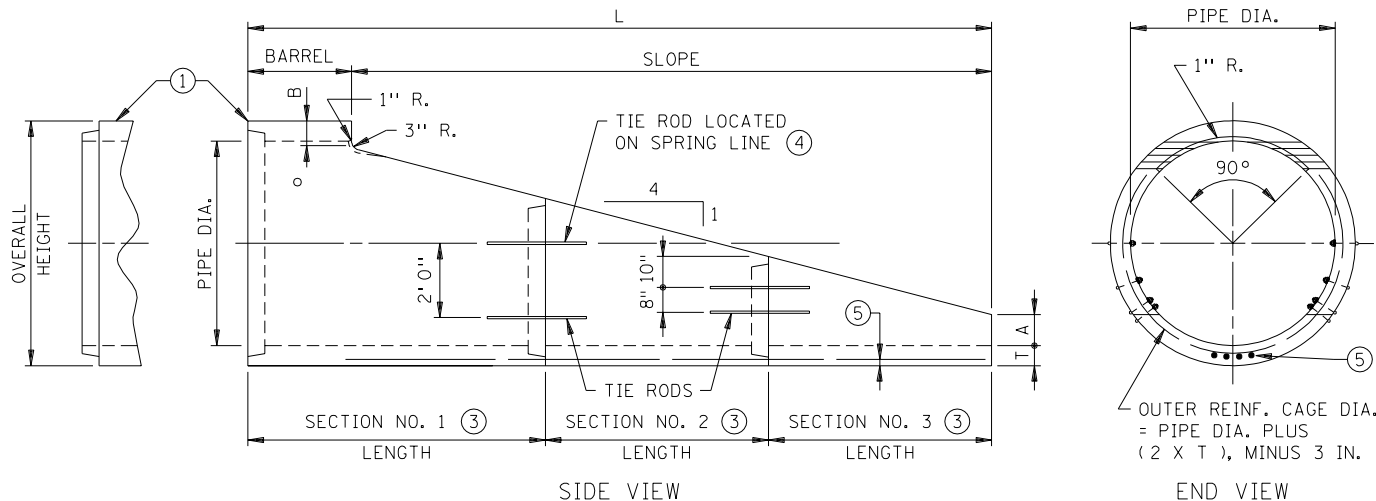


PIPE DIA.	OVERALL HEIGHT	T	A	B	SLOPE	BARREL	L	SECT. 1 LENGTH	SECT. 2 LENGTH	NO. OF BARS (5)	BAR SPACING (5)	APPROXIMATE WEIGHT LBS.
30"	37"	3-1/2"	7-1/2"	5-7/8"	7' 6"	1' 0"	8' 6"	8' 6"	NONE	3	4"	2075
30"	37"	3-1/2"	9-5/8"	5-7/8"	6' 0"	2' 0"	8' 0"	8' 0"	NONE	3	4"	2170
36"	44"	4"	12"	6-1/4"	7' 3"	1' 3"	8' 6"	8' 6"	NONE	3	4"	2950
42"	51"	4-1/2"	12"	6-7/8"	9' 2-1/2"	2' 9-1/2"	12' 0"	6' 0"	6' 0"	3	4"	NO.1-3800 NO.2-2100
48"	58"	5"	12"	7-3/8"	11' 2-1/2"	2' 9-1/2"	14' 0"	8' 0"	6' 0"	4	4"	NO.1-6080 NO.2-2330
54"	65"	5-1/2"	12"	7-7/8"	13' 2-1/2"	2' 9-1/2"	16' 0"	8' 0"	8' 0"	4	4"	NO.1-7680 NO.2-4380

SLOPED END SECTION
30" - 54" DIA. PIPE



PIPE DIA.	OVERALL HEIGHT	T	A	B	SLOPE	BARREL	L	SECT. 1 LENGTH	SECT. 2 LENGTH	SECT. 3 LENGTH	NO. OF BARS (5)	BAR SPACING (5)	APPROXIMATE WEIGHT LBS.
60"	72"	6"	12"	8-3/8"	15' 2-1/2"	2' 9-1/2"	18' 0"	6' 0"	6' 0"	6' 0"	4	4"	NO.1-7400 NO.2-5170 NO.3-2800
72"	86"	7"	12"	9-3/8"	19' 2-1/2"	2' 9-1/2"	22' 0"	8' 0"	8' 0"	6' 0"	4	4"	NO.1-12130 NO.2-8000 NO.3-4050

THREE PIECE SLOPED END SECTION
60" & 72" DIA. PIPE

NOTES:

ALL REBARS ARE IN METRIC DESIGNATIONS

REINFORCING STEEL AND CONCRETE PER AASHTO M170.

REINFORCEMENT SHALL CONFORM TO STANDARD REINFORCED CONCRETE PIPE CLASS II.

JOINTS IN END SECTION PER STANDARD PLATE 3000, OR APPROVED EQUAL.

JOINTS SHALL BE SEALED PER SPEC. 2503.3C.

INNER CAGE NOT REQUIRED IN SLOPE AREA.

① SEE PLANS FOR TYPE OF END REQUIRED.

② NO TIE RODS OR ADDITIONAL JOINTS REQUIRED.

③ SECTION LENGTHS MAY VARY, TOTAL LENGTH TO EQUAL L.

④ SEE STANDARD PLATE 3145 FOR DETAILS.

⑤ NO. 13 BARS, MIN. LENGTH = SLOPE. 1" CLEAR ALL SIZES.

⑥ DESIGN USED IS CONTRACTOR'S OPTION.

APPROVED SEPT. 19, 2000

Delbert W. Sunde
STATE DESIGN ENGINEER

STATE OF MINNESOTA
DEPARTMENT OF TRANSPORTATION

PRECAST CONCRETE SAFETY APRON
(1:4 SLOPE)

SPECIFICATION
REFERENCE

2501

STANDARD
PLATE
NO.

3022C
3 OF 3