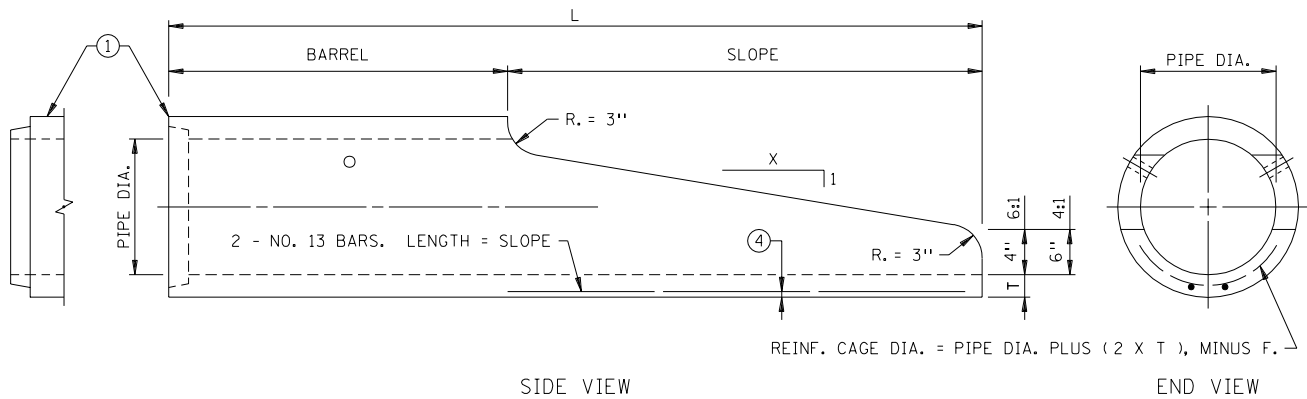


TOP VIEW



REINF. CAGE DIA. = PIPE DIA. PLUS (2 X T), MINUS F.

SIDE VIEW

END VIEW

DESIGN OPTION NO. 2

1:6 SLOPES

DIAMETER (IN.)	T (IN.)	L (IN.)	SLOPE (IN.)	BARREL (IN.)	D (IN.)	E (IN.)	F (IN.)	WEIGHT (LBS.)
12	2	72	42	30	6	3	2-1/4	415
15	2-1/4	84	60	24	8	4	2-1/4	595
18	2-1/2	96	81	15	10	5	2-1/2	850
24	3	144 (2)	120	24	11	6	2-1/2	NO. 1 1280 NO. 2 720

1:4 SLOPES

DIAMETER (IN.)	T (IN.)	L (IN.)	SLOPE (IN.)	BARREL (IN.)	D (IN.)	E (IN.)	F (IN.)	WEIGHT (LBS.)
18	2-1/2	72	46	26	10	5	2-1/2	750
24	3	96	72	24	11	6	2-1/2	1450

NOTES:

ALL REBARS ARE IN METRIC DESIGNATIONS

THE DESIGN USED IS THE CONTRACTOR'S OPTION.

REINFORCEMENT AND CONCRETE SHALL CONFORM TO STANDARD REINFORCED CONCRETE PIPE CLASS II, EXCEPT AS NOTED.

JOINT IN END SECTION PER STANDARD PLATE 3000, OR APPROVED EQUAL.

(1) GROOVE END ON OUTLET END SECTION. TONGUE END ON INLET END SECTION.

(2) TWO 6 FOOT SECTIONS.

(3) SEE STANDARD PLATE 3145 FOR DETAILS.

(4) 5/8" CLEAR TO 15" DIA., 3/4" CLEAR OVER 15" DIA.

APPROVED SEPT. 19, 2000

Delbert W. Jones
STATE DESIGN ENGINEER

STATE OF MINNESOTA
DEPARTMENT OF TRANSPORTATION

PRECAST CONCRETE SAFETY APRON
(DESIGN OPTION NO. 2)

SPECIFICATION
REFERENCE

2501

STANDARD
PLATE
NO.

3022C
2 OF 3