

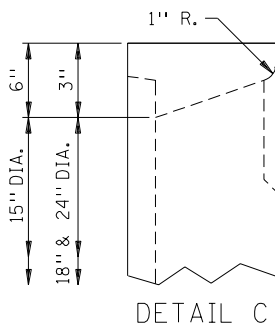
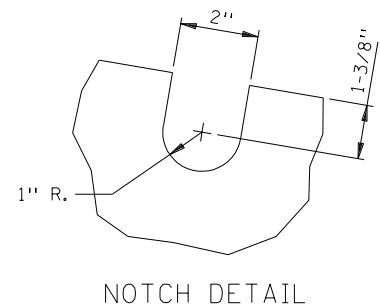
DESIGN OPTION NO. 1

1:6 SLOPES

PIPE SIZE	A INSIDE	B ϕ - ϕ	L	OVERALL HEIGHT	OVERALL WIDTH	WEIGHT (LBS.)
15"	15"	4' 0"	9' 4-1/2"	24"	24"	1800
18"	18"	4' 0"	9' 4-1/2"	24"	24"	1700
24"	24"	6' 0"	12' 4" ②	30"	30"	2800

1:4 SLOPES

PIPE SIZE	A INSIDE	B ϕ - ϕ	L	OVERALL HEIGHT	OVERALL WIDTH	WEIGHT (LBS.)
24"	24"	4' 0"	8' 5"	30"	30"	1900



NOTES:

ALL REBARS ARE IN METRIC DESIGNATIONS

THE DESIGN USED IS THE CONTRACTOR'S OPTION.
 REINFORCING STEEL AND CONCRETE PER AASHTO M170.
 REINFORCEMENT SHALL CONFORM TO STANDARD REINFORCED CONCRETE PIPE CLASS II, LOCATED AT CENTER OF WALL PLUS ONE (1) NO. 13 BAR, TOP, BOTTOM AND EACH SIDE.
 JOINT IN END SECTION PER STANDARD PLATE 3000.
 TOP EXPOSED CONCRETE CORNERS SHALL HAVE 3/4" CHAMFER.
 TIE BOLTS AS REQUIRED.

- ① SEE PLANS FOR TYPE OF END REQUIRED.
- ② TWO PIECE CONSTRUCTION PERMISSIBLE.
- ③ SEE STANDARD PLATE 3145 FOR DETAILS.

APPROVED SEPT. 19, 2000

Delbert W. Soudes
STATE DESIGN ENGINEER

STATE OF MINNESOTA
DEPARTMENT OF TRANSPORTATION

PRECAST CONCRETE SAFETY APRON
(DESIGN OPTION NO. 1)

SPECIFICATION
REFERENCE

2501

STANDARD
PLATE
NO.

3022C
1 OF 3